

ICON MARINA PLAT

A REPLAT OF LOTS 13 THROUGH 27, BLOCK 2 OF NORTH PALM BEACH PLAT NO. 1 AS RECORDED IN PLAT BOOK 6, PAGE 30 TOGETHER WITH ADDITIONAL LANDS IN SECTIONS 3 AND 4, TOWNSHIP 43 SOUTH, RANGE 43 EAST, CITY OF WEST PALM BEACH, PALM BEACH COUNTY, FLORIDA

131

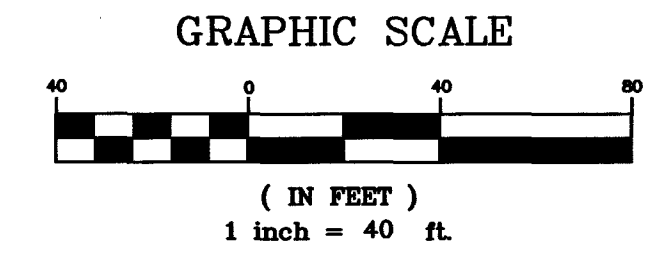
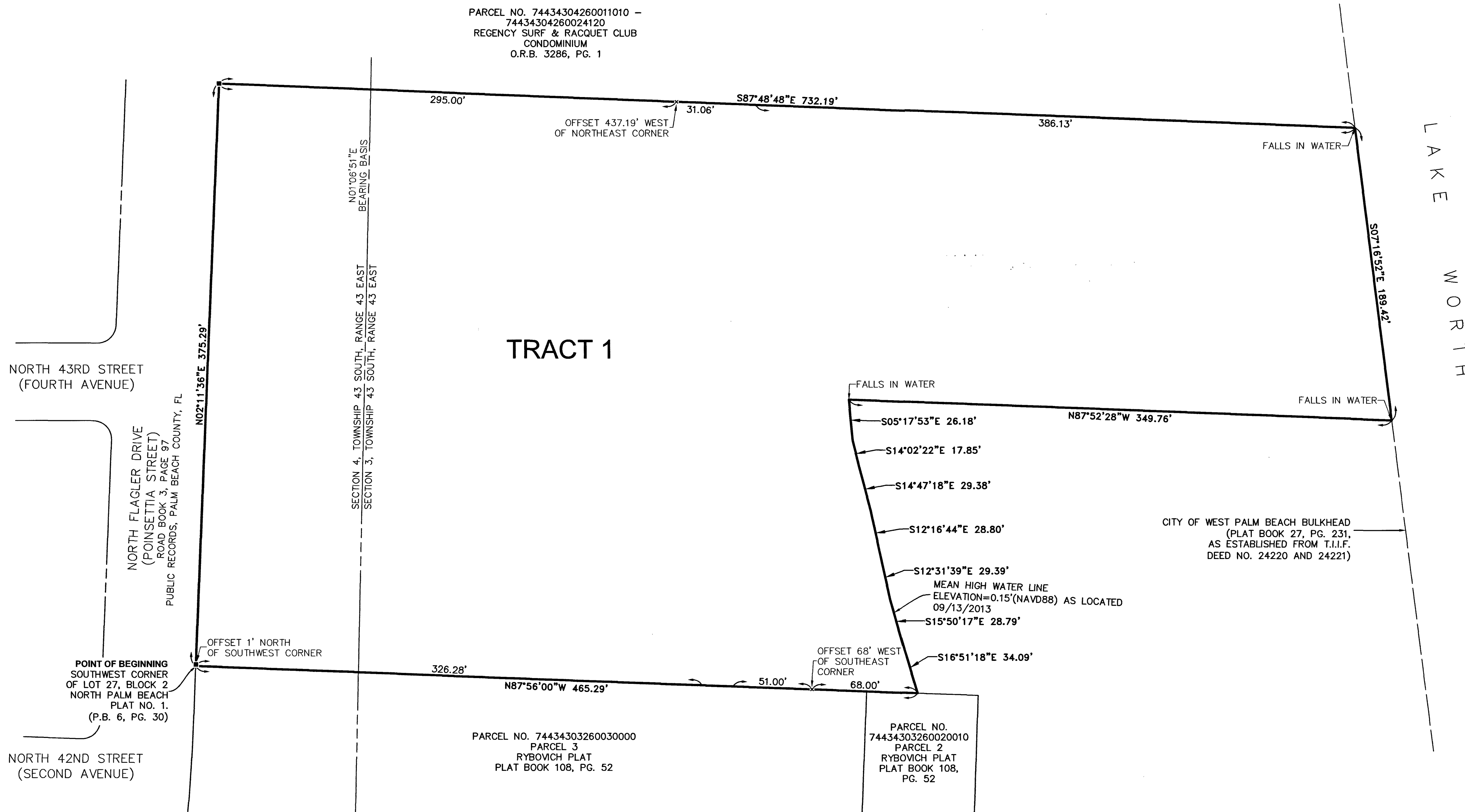
STATE OF FLORIDA
COUNTY OF PALM BEACH

This plat was filed for record at _____, M, this _____ day of _____, 2024 and duly recorded in Plat Book No. _____, on Pages _____ to _____.

Joseph Abruzzo, Clerk & Comptroller

By: _____

PARCEL NO. 74434304260011010 -
74434304260024120
REGENCY SURF & RACQUET CLUB
CONDOMINIUM
O.R.B. 3286, PG. 1



LEGEND	
P.O.B.	= POINT OF BEGINNING
P.O.C.	= POINT OF COMMENCEMENT
PS.	= PAGE
O.R.B.	= OFFICIAL RECORDS BOOK
P.B.	= PLAT BOOK
■	= SET PERMANENT REFERENCE MONUMENT LABELED
●	= SET STAINLESS STEEL SCREW & WASHER "PCP LB 4108"

POINT OF BEGINNING
SOUTHWEST CORNER
OF LOT 27, BLOCK 2
NORTH PALM BEACH
PLAT NO. 1,
(P.B. 6, PG. 30)

PARCEL NO. 74434303260030000
PARCEL 3
RYBOVICH PLAT
PLAT BOOK 108, PG. 52

PARCEL NO. 74434303260020010
PARCEL 2
RYBOVICH PLAT
PLAT BOOK 108,
PG. 52

CITY OF WEST PALM BEACH BULKHEAD
(PLAT BOOK 27, PG. 231,
AS ESTABLISHED FROM T.I.I.F.
DEED NO. 24220 AND 24221)

GCY JOB NO. 22-1041-01

GCY
INCORPORATED
PROFESSIONAL SURVEYORS AND MAPPERS
CERTIFICATE OF AUTHORIZATION LB 4108
CORPORATE OFFICE
PO BOX 1469 • 1505 SW MARTIN HWY.
PALM CITY, FL 34991
(772) 286-8083